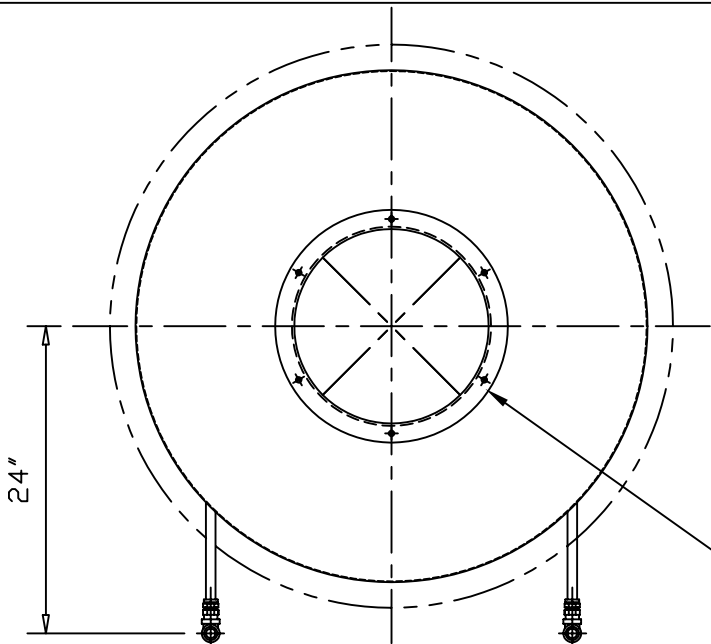


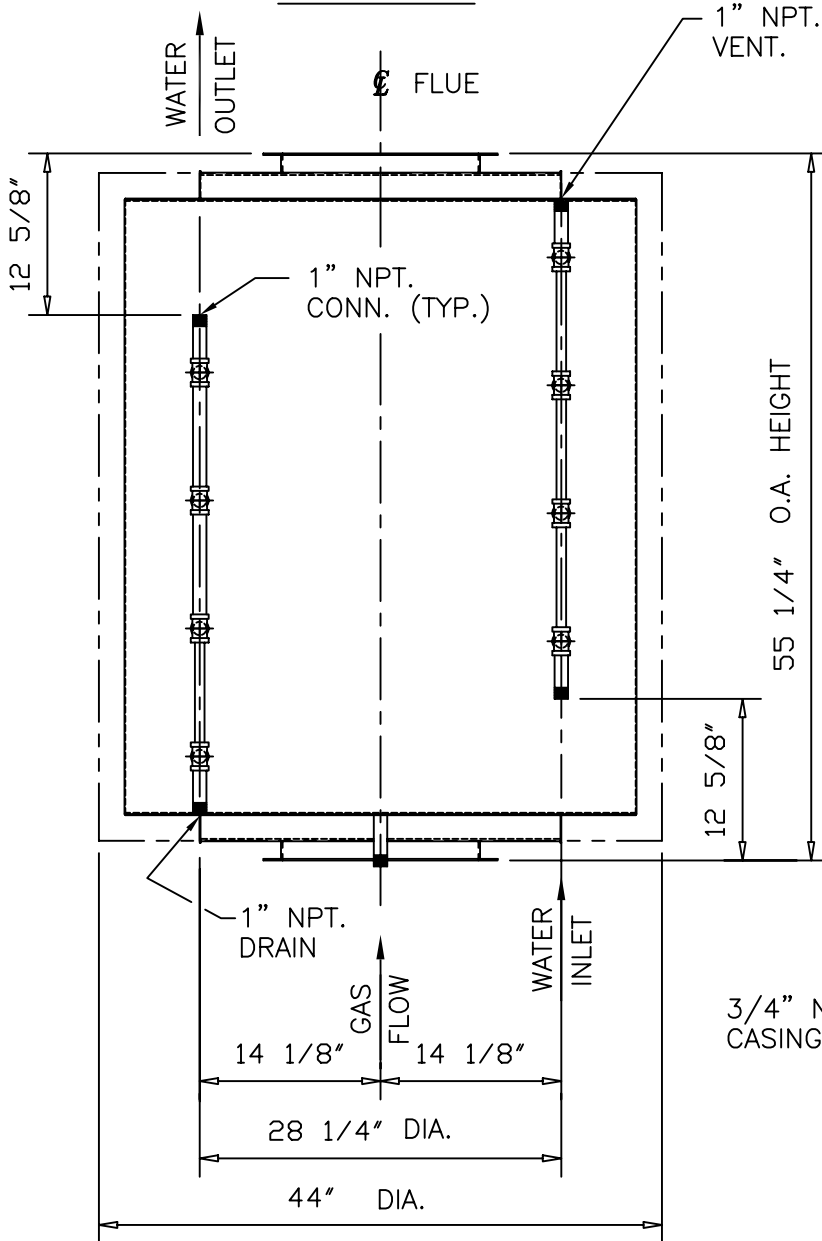
A.S.M.E. CODE SECTION VIII, DIV. 1 "U" STAMP.  
 2004 EDITION, LATEST ADDENDA.  
 DESIGN PRESSURE: 450 PSIG.  
 DESIGN TEMPERATURE: 600°F  
 MDMT: 35° AT 450 PSIG.  
 APPROX. UNIT WEIGHT FLOODED: 600 LBS.  
 STAINLESS STEEL GAS AND WATER SIDE CONST.



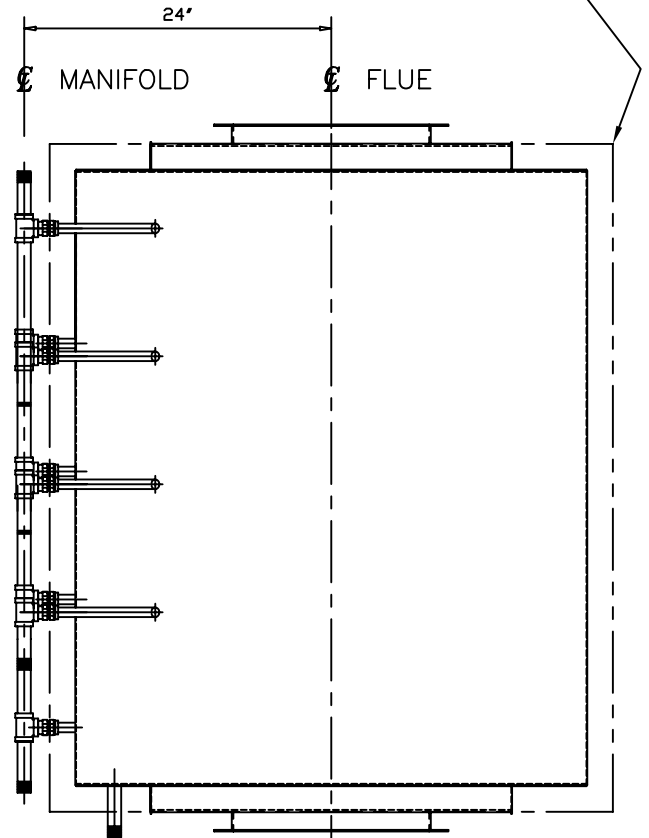
GAS FLANGES TO SUIT.  
 TYP. TOP AND BOTTOM.

UNIT TO HAVE 2" THK.  
 JACKETED INSULATION.  
 (SHOWN IN PHANTOM)

PLAN VIEW



ELEVATION VIEW



END VIEW

3/4" NPT.  
 CASING DRAIN

<b>BOILERROOM EQUIPMENT, INC.</b>		
HEATSPONGE SHORTY-4 MODEL		
DRAWING NUMBER	REV	
A-SHORTY-4-GA	0	